

# Fabric Collection Card 2024

**4MARIANI**



## Ambra

cat. S

### Composizione, Composition

60%	Acrilica, Acrylic
19%	Cotone, Cotton
11%	Viscosa, Viscose
6%	Poliestere, Polyester
4%	Altre fibre, Other fibers

### Peso, Weight

966 gr/m<sup>2</sup>

### Resistenza all'abrasione, Martindale Abrasion Test

90.000 cicli, rubs

### Istruzioni di lavaggio, Cleaning instructions



### Solidità alla luce , Colour fastness to light

5

### Resistenza al fuoco, Fire Resistance

Risponde al test BS 5852:1979 parte 1; risponde al test Technical Bulletin 117-2013

Meets BS 5852:1979 test part 1; meets Technical Bulletin 117-2013 test



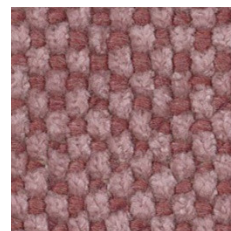
01



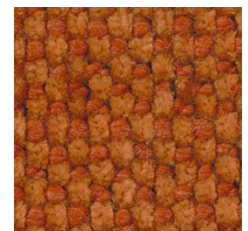
02/1



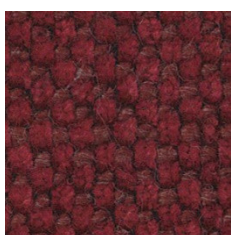
03/1



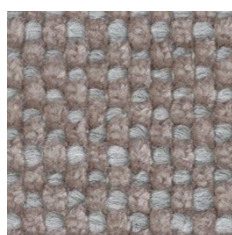
66/1



30/12



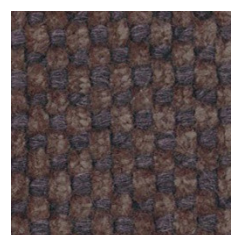
45/4



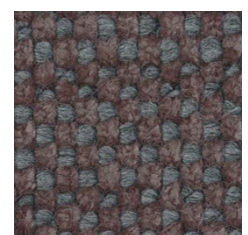
90/1



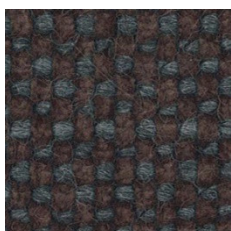
09/1



96/1



96/3



98/1

I colori sopra riportati sono indicativi e validi solo come riferimento; la tonalità e l'intensità dei colori può variare a seconda del monitor utilizzato.  
The above colors are indicative and valid only as reference; the color tone and intensity may vary depending on the monitor used.

## Balmoral

cat. T

### Composizione, Composition

41%	Poliestere riciclato, Recycled Polyester
19%	Poliestere, Polyester
18%	Lana, Wool
15%	Cotone riciclato, Recycled Cotton
6%	Cotone, Cotton
1%	Altre fibre riciclate, Other recycled fibers

### Peso, Weight

854 gr/m<sup>2</sup>

### Resistenza all'abrasione, Martindale Abrasion Test

100.000 cicli, rubs

### Solidità alla luce, Colour fastness to light

4/5

### Resistenza al fuoco, Fire Resistance

Risponde al test BS 5852:1979 parte 1; risponde al test Technical Bulletin 117-2013

Meets BS 5852:1979 test part 1; meets Technical Bulletin 117-2013 test

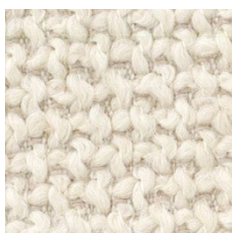
Questo tessuto è certificato secondo il Global Recycled System ed è realizzato con il parziale impiego di fibre riciclate.

This fabric is certified according to the Global Recycled System and is made with the partial use of recycled fibres.

### Istruzioni di lavaggio, Cleaning instructions



07



01



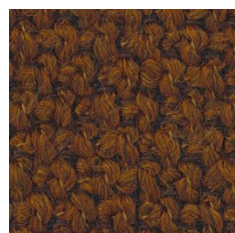
03



85



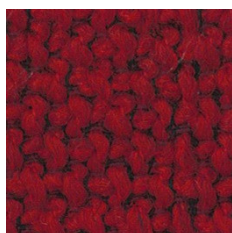
04



31



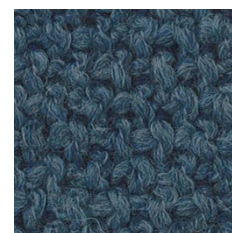
45



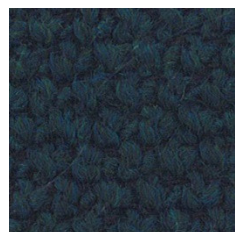
40



15



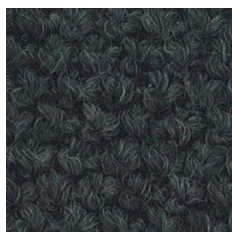
72



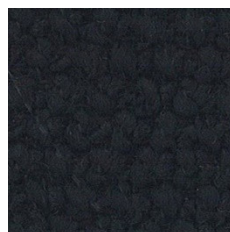
71



90



91



99

I colori sopra riportati sono indicativi e validi solo come riferimento; la tonalità e l'intensità dei colori può variare a seconda del monitor utilizzato.  
The above colors are indicative and valid only as reference; the color tone and intensity may vary depending on the monitor used.

## Flashdance

cat. T

### Composizione, Composition

47%	Poliestere, Polyester
44%	Cotone, Cotton
8%	Altre fibre, Other fibers
1%	Gomma, Rubber

### Resistenza all'abrasione, Martindale Abrasion Test

110.000 cicli, rubs

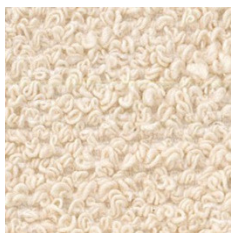
### Solidità alla luce, Colour fastness to light

5

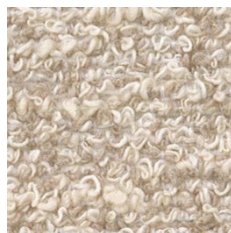
### Peso, Weight

800 gr/m<sup>2</sup>

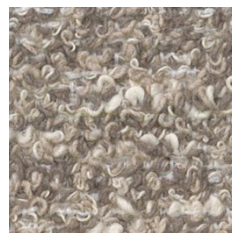
### Istruzioni di lavaggio, Cleaning instructions



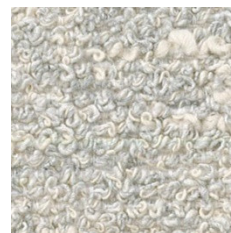
102



202



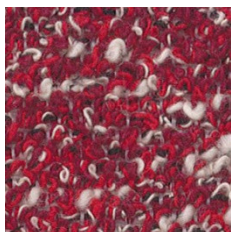
308



907



801



515



911



718



999

I colori sopra riportati sono indicativi e validi solo come riferimento; la tonalità e l'intensità dei colori può variare a seconda del monitor utilizzato.  
The above colors are indicative and valid only as reference; the color tone and intensity may vary depending on the monitor used.

## Funky

cat. T

### Composizione, Composition

56% Cotone, Cotton  
 22% Poliestere, Polyester  
 18% Acrilica, Acrylic  
 4% Poliammidica, Polyamide

### Peso, Weight

820 gr/m<sup>2</sup>

### Resistenza all'abrasione, Martindale Abrasion Test

30.000 cicli, rubs

### Solidità alla luce, Colour fastness to light

4/5

### Resistenza al fuoco, Fire Resistance

Risponde al test BS 5852:1979 parte 0; risponde al test Technical Bulletin 117

Meets BS 5852:1979 test part 0; meets Technical Bulletin 117 test

### Istruzioni di lavaggio, Cleaning instructions



01



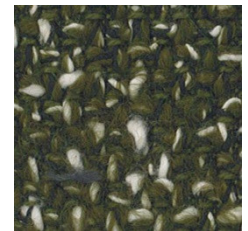
02



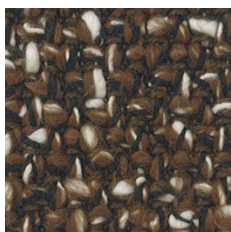
03



20



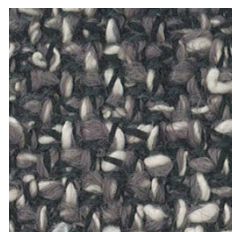
11



52



91



90



99

I colori sopra riportati sono indicativi e validi solo come riferimento; la tonalità e l'intensità dei colori può variare a seconda del monitor utilizzato.  
 The above colors are indicative and valid only as reference; the color tone and intensity may vary depending on the monitor used.

## Khali

cat. T

### Composizione, Composition

47% Viscosa, Viscose  
 22% Cotone, Cotton  
 18% Poliestere, Polyester  
 13% Lino, Lin

### Resistenza all'abrasione, Martindale Abrasion Test

30.000 cicli, rubs

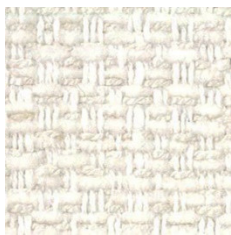
### Solidità alla luce, Colour fastness to light

4/5

### Peso, Weight

770 gr/m<sup>2</sup>

### Istruzioni di lavaggio, Cleaning instructions



101



102



103



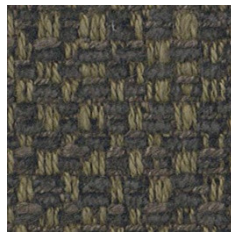
112



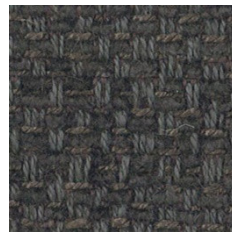
111



110



104



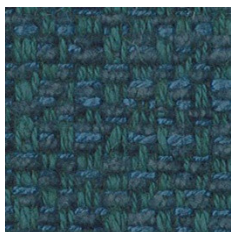
108



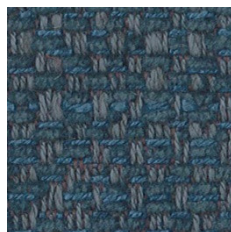
109



114



106



107

I colori sopra riportati sono indicativi e validi solo come riferimento; la tonalità e l'intensità dei colori può variare a seconda del monitor utilizzato.  
 The above colors are indicative and valid only as reference; the color tone and intensity may vary depending on the monitor used.

## Le Fate

cat. T

### Composizione, Composition

72% Acrilica, Acrylic  
28% Poliestere, Polyester

### Peso, Weight

590 gr/m<sup>2</sup>

### Resistenza all'abrasione, Martindale Abrasion Test

27.000 cicli, rubs

### Solidità alla luce, Colour fastness to light

5

### Resistenza al fuoco, Fire Resistance

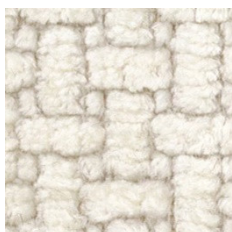
Risponde al test BS 5852:1979 parte 0; risponde al test Technical Bulletin 117

Meets BS 5852:1979 test part 0; meets Technical Bulletin 117 test

### Istruzioni di lavaggio, Cleaning instructions



30



02



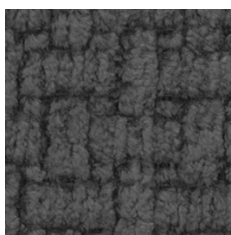
03



06



23



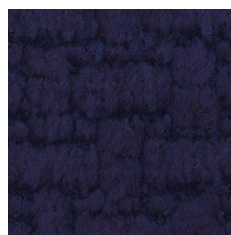
26



19



29



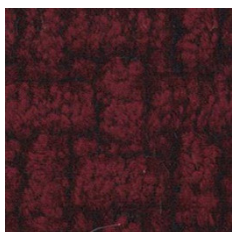
27



08



12



28

I colori sopra riportati sono indicativi e validi solo come riferimento; la tonalità e l'intensità dei colori può variare a seconda del monitor utilizzato.  
The above colors are indicative and valid only as reference; the color tone and intensity may vary depending on the monitor used.



## Lucrezia

cat. T

### Composizione, Composition

44% Viscosa, Viscose  
 28% Cotone, Cotton  
 15% Lino, Linen  
 13% Poliestere, Polyester

### Peso, Weight

485 gr/m<sup>2</sup>

### Resistenza all'abrasione, Martindale Abrasion Test

37.000 cicli, rubs

### Solidità alla luce , Colour fastness to light

4

### Resistenza al fuoco, Fire Resistance

Risponde al test BS 5852:1979 parte 0  
 Meets BS 5852:1979 test part 0

### Istruzioni di lavaggio, Cleaning instructions



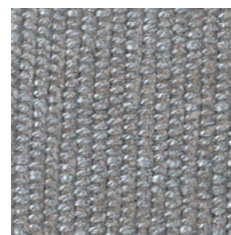
02



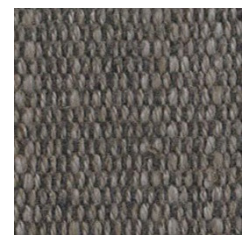
41



03



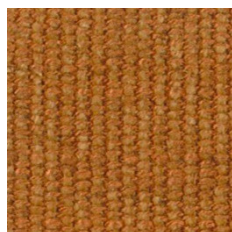
14



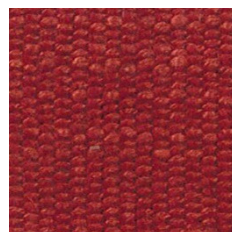
12



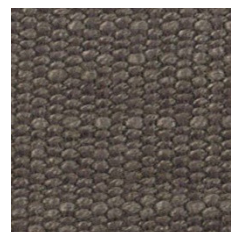
23



19



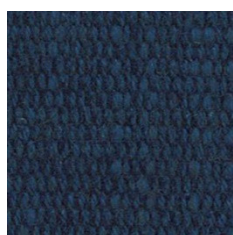
18



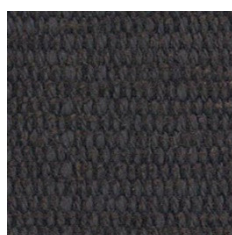
10



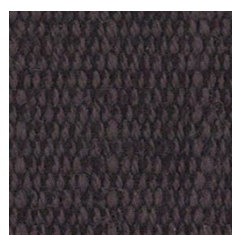
34



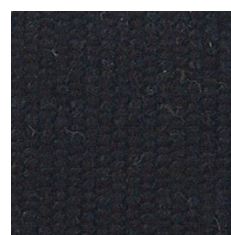
28



07



31



32

I colori sopra riportati sono indicativi e validi solo come riferimento; la tonalità e l'intensità dei colori può variare a seconda del monitor utilizzato.  
 The above colors are indicative and valid only as reference; the color tone and intensity may vary depending on the monitor used.

## M039

## cat. L

### Composizione, Composition

34%	Viscosa, Viscose
32%	Cotone, Cotton
15%	Lino, Linen
13%	Acrilica, Acrylic
6%	Poliestere, Polyester

### Resistenza all'abrasione, Martindale Abrasion Test

30.000 cicli, rubs

### Solidità alla luce, Colour fastness to light

4/5

### Peso, Weight

570 gr/m<sup>2</sup>

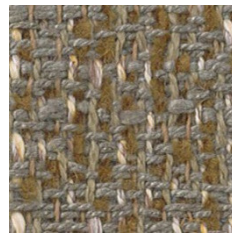
### Istruzioni di lavaggio, Cleaning instructions



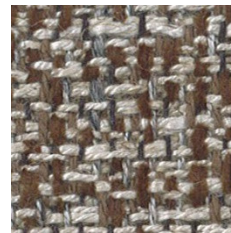
22



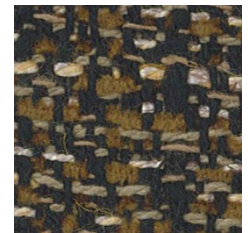
02



10



21



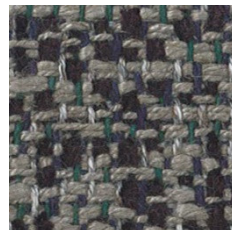
16



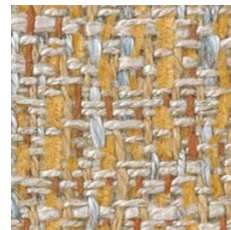
15



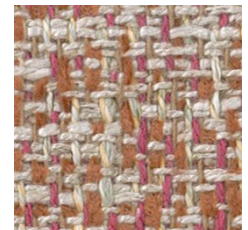
01



19



09



06

I colori sopra riportati sono indicativi e validi solo come riferimento; la tonalità e l'intensità dei colori può variare a seconda del monitor utilizzato.  
The above colors are indicative and valid only as reference; the color tone and intensity may vary depending on the monitor used.

## Ricciolone

cat. S

### Composizione, Composition

56%	Acrilica, Acrylic
15%	Poliestere, Polyester
12%	Viscosa, Viscose
11%	Cotone, Cotton
6%	Lino, Linen

### Peso, Weight

660 gr/m<sup>2</sup>

### Resistenza all'abrasione, Martindale Abrasion Test

30.000 cicli, rubs

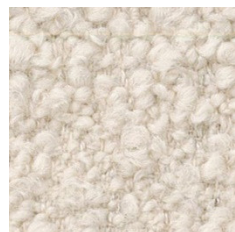
### Solidità alla luce, Colour fastness to light

4/5

### Resistenza al fuoco, Fire Resistance

Risponde al test BS 5852:1979 parte 1  
Meets BS 5852:1979 test part 1

### Istruzioni di lavaggio, Cleaning instructions



01



01/2



05



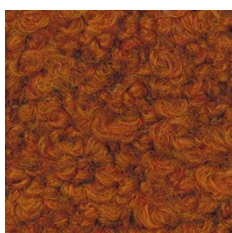
09/1



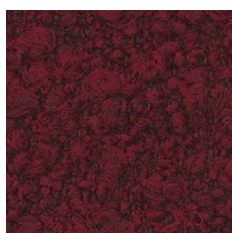
02/2



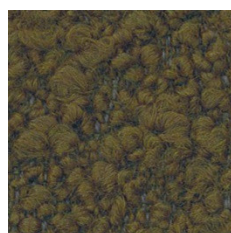
20/1



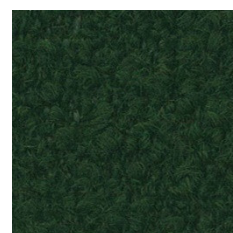
39



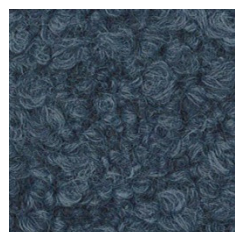
39/1



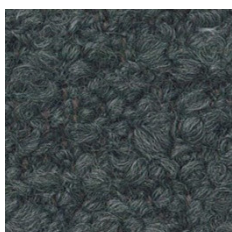
07



98/3



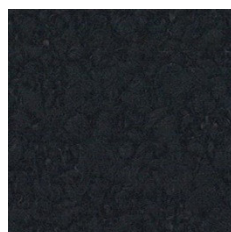
98/2



09



98/1



98

I colori sopra riportati sono indicativi e validi solo come riferimento; la tonalità e l'intensità dei colori può variare a seconda del monitor utilizzato.  
The above colors are indicative and valid only as reference; the color tone and intensity may vary depending on the monitor used.

## Tofee

cat. T

### Composizione, Composition

49% Cotone, Cotton  
 35% Viscosa, Viscose  
 10% Acrilica, Acrylic  
 6% Poliestere, Polyester

### Resistenza all'abrasione, Martindale Abrasion Test

21.000 cicli, rubs

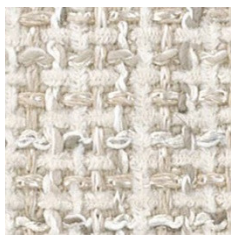
### Solidità alla luce, Colour fastness to light

4/5

### Peso, Weight

520 gr/m<sup>2</sup>

### Istruzioni di lavaggio, Cleaning instructions



01



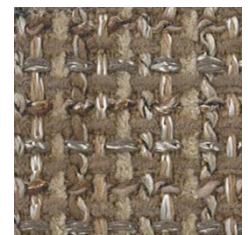
02



03



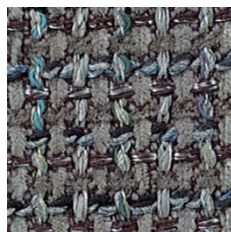
04



12



08



07



05

I colori sopra riportati sono indicativi e validi solo come riferimento; la tonalità e l'intensità dei colori può variare a seconda del monitor utilizzato.  
 The above colors are indicative and valid only as reference; the color tone and intensity may vary depending on the monitor used.

## Trieste

cat. Z

### Composizione, Composition

42%	Viscosa, Viscose
16%	Lino, Linen
14%	Acrilica, Acrylic
12%	Cotone, Cotton
11%	Poliestere, Polyester
5%	Juta, Jute

### Resistenza all'abrasione, Martindale Abrasion Test

25.000 cicli, rubs

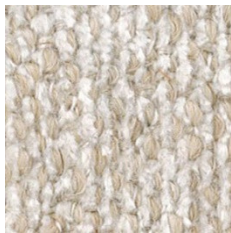
### Solidità alla luce, Colour fastness to light

4/5

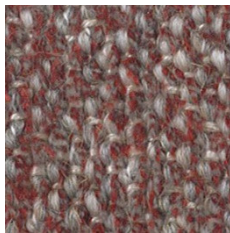
### Peso, Weight

740 gr/m<sup>2</sup>

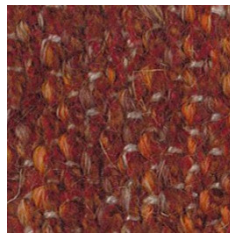
### Istruzioni di lavaggio, Cleaning instructions



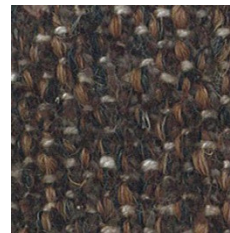
31



60



17



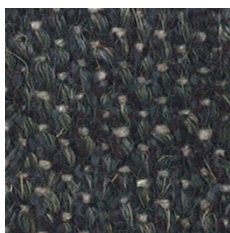
11



33



01



62



05



02



61

I colori sopra riportati sono indicativi e validi solo come riferimento; la tonalità e l'intensità dei colori può variare a seconda del monitor utilizzato.  
The above colors are indicative and valid only as reference; the color tone and intensity may vary depending on the monitor used.

Tundra

cat. S

**Composizione, Composition**

42% Viscosa, Viscose  
 38% Cotone, Cotton  
 14% Acrilica, Acrylic  
 6% Poliestere, Polyester

**Peso, Weight**

730 gr/m<sup>2</sup>

**Resistenza all'abrasione, Martindale Abrasion Test**

20.000 cicli, rubs

**Istruzioni di lavaggio, Cleaning instructions**



**Solidità alla luce , Colour fastness to light**

4/5

**Resistenza al fuoco, Fire Resistance**

Risponde al test BS 5852:1979 parte 1  
 Meets BS 5852:1979 test part 1



26



28



02



04



29



08



10



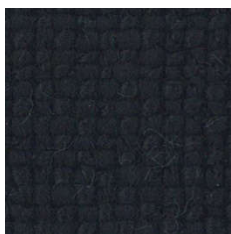
11



06



19



01

I colori sopra riportati sono indicativi e validi solo come riferimento; la tonalità e l'intensità dei colori può variare a seconda del monitor utilizzato.  
 The above colors are indicative and valid only as reference; the color tone and intensity may vary depending on the monitor used.

